

Introducing the SOLO PV



The Solo PV display is designed to provide solar panel installers and manufacturers with a product that will differentiate their solar panel proposition, in an increasingly competitive market.

The display provides live generation data, in kWh, carbon saved and money earned via feed-in tariffs. Utilising the GEO standard speedometer design the display is simple and intuitive. The display also shows generation over the course of the day, yesterday and the last 7-days.

Designed specifically for the PV market the Solo indicates when the array is producing enough energy to power high load appliances (such as dishwashers and tumble dryers), ensuring power generated via panels is used efficiently.

An LED reader is used to take fiscally accurate information directly from the generation pulse meter. This ensures the Solo is easy to install and that it is compatible with the majority of OFGEM approved generation meters.

Included with all Solo PV displays is access to GEO's MyEnergy web portal. Using an SD card, several years of data can be stored and transferred to the graphical web portal allowing comparison of historic data and trends.

- *LED reader for easy installation and accurate readings*
- *Works independently of the inverter*
- *Compatible with OFGEM approved generation meters*
- *Designed specifically for the PV market*
- *FREE intuitive online web platform*
- *From the leading manufacturer of in-home displays in Europe*



Solo Specifications

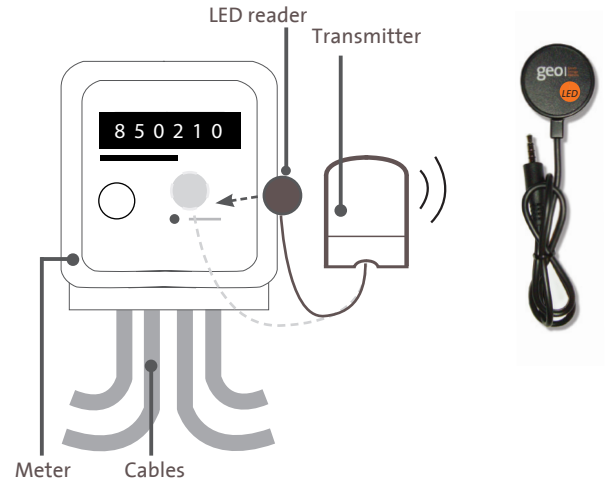
Display

Dimensions:	approx 145 x 75 x 35mm
Materials:	UL approved ABS
Window:	perspex or similar with protective coating, 2 colour printing
Ingress Protection:	IP20
Ambient temperature:	0°C to +45°C operating, 75% RH non-condensing
Power consumption:	< 0.75W active, 0.5W with backlight off
Power supply:	mains PSU, 230Vac nominal 50Hz for UK wall socket
DC socket:	barrel-type
Radio:	2.4GHz ZigBee, Manufacturer Specific profile
Display:	colour transfective backlit TN LCD, approx. 55 x 90mm active area, chip on glass
UI:	3 momentary buttons, LED for display functions see the Solo user manual

Transmitter

Dimensions:	approx 150 x 70 x 45mm
Materials:	UL approved ABS
Ingress Protection:	IP52
Ambient temperature:	-20°C to +45°C operating, 75% RH non-condensing
Battery life:	>2 years typical, 8mths minimum for a continuously changing load
Battery type:	3 X AA batteries
Sensor-In socket:	barrel-type, 35mm jack
Radio:	2.4GHz ZigBee, Manufacturer Specific profile
UI:	single momentary button for pairing with LED feedback
Measurement:	Pulse
Measurement interval:	Transmission every 5 seconds
Transmission interval:	2 second minimum, triggered by a load change of > 25W

LED Reader



Performance

Range:	30m, 2 stud walls
Manufacturing life:	2 yrs, i.e. components shall not have an end-of-life within 2 yrs of manufacture start
Pack includes:	display, transmitter, stand, LED sensor, batteries, PSU, instructions, packaging, batteries
Warranty:	12 months

Approvals

•EN300 328	• EN55024
•EN 301 489	• EN60335-1
•EN61000-3-2	• CE
•EN61000-3-3	• RoHS
	• WEEE